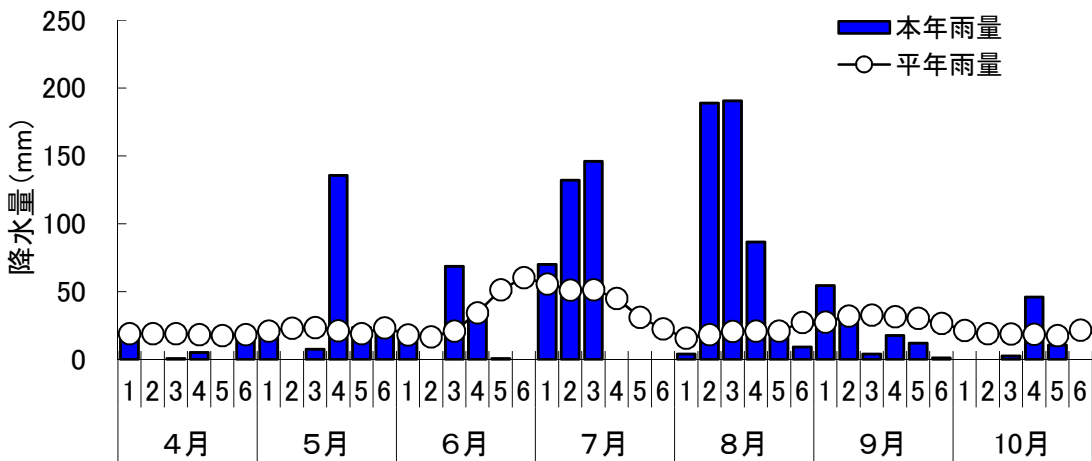
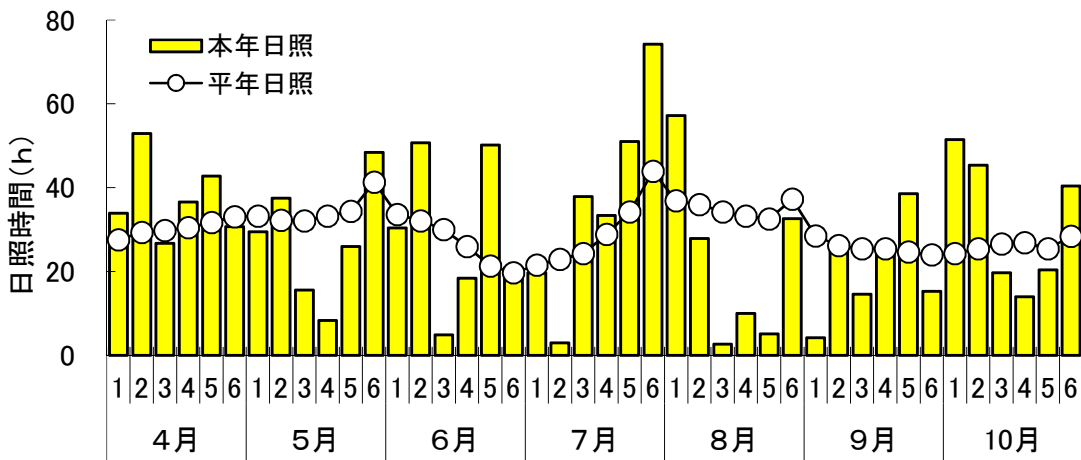
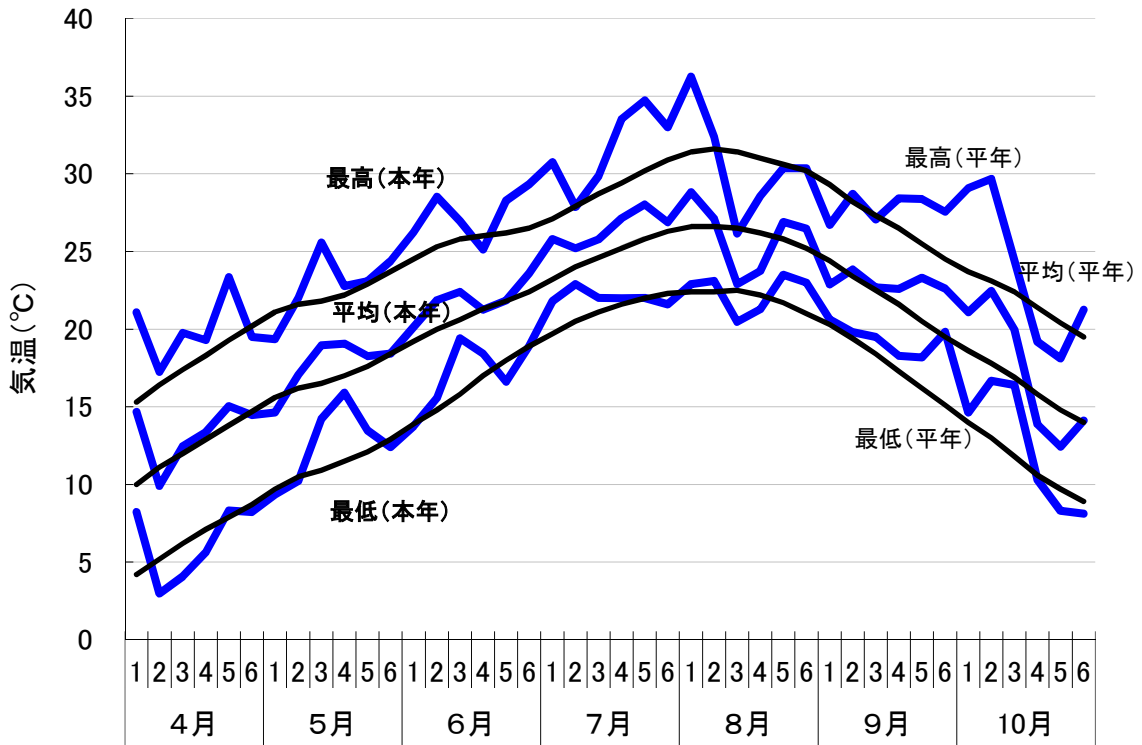
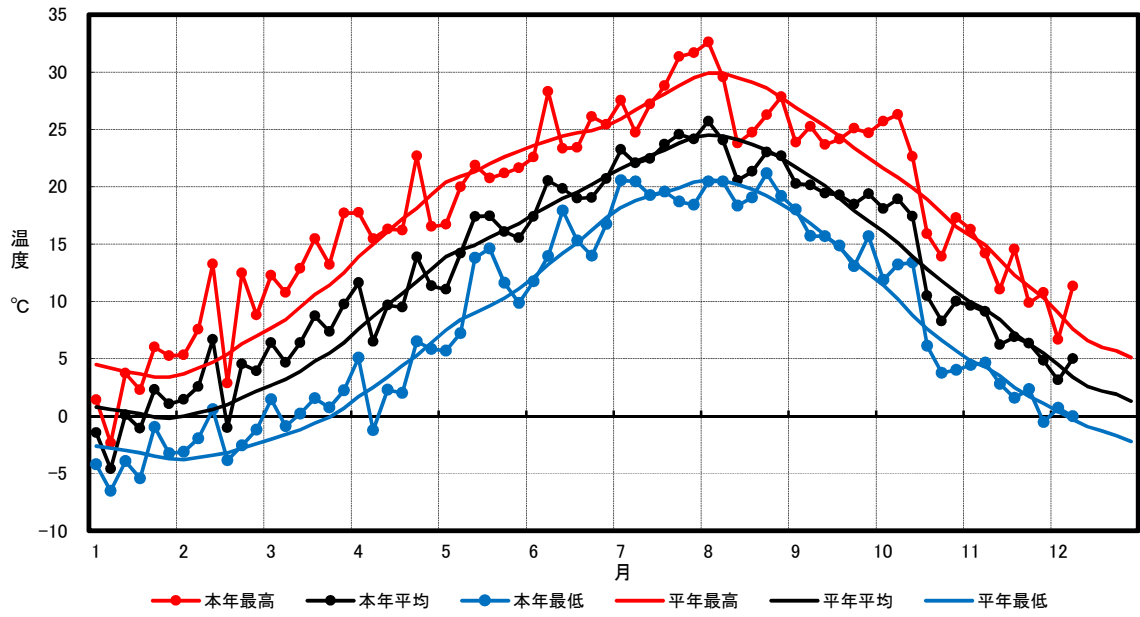
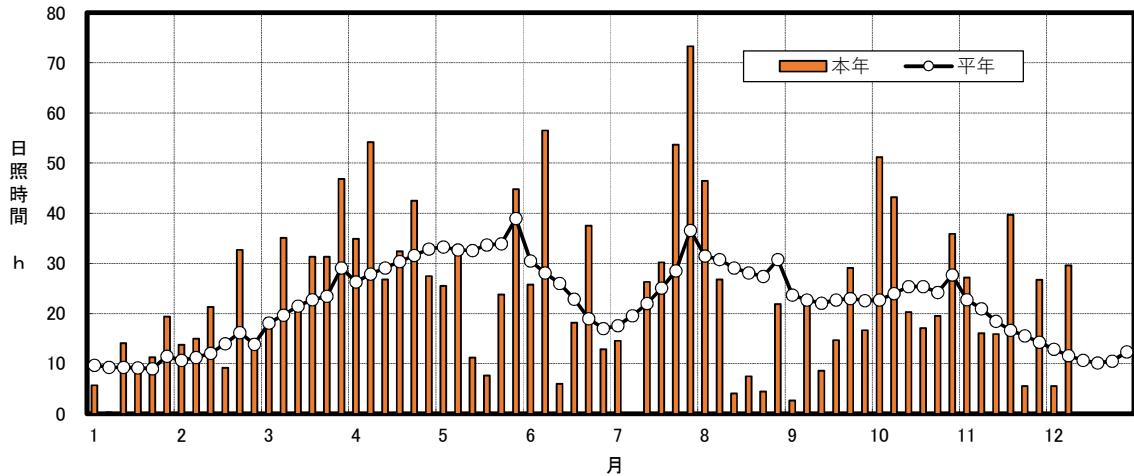


令和3年気象図(出雲)

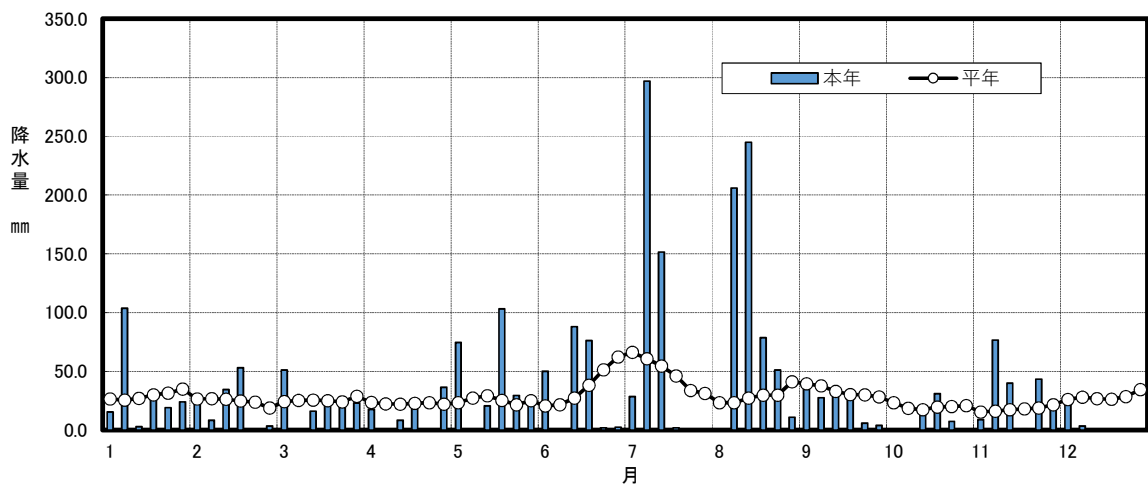




第1図 最高気温、最低気温の推移



第2図 日照時間の推移



第3図 降水量の推移

(付図) 令和3年度 稲作期間気象図(飯南町)

[付] 令和3年度 稲作期間半旬別気象表(飯南町)

観測地点:島根県農業技術センター下赤名ほ場内(島根県飯石郡飯南町下赤名)

| 月 | 半旬 | 平均気温(°C) | | 最高気温(°C) | | 最低気温(°C) | | 降水量(mm) | | 日照時数(hr) | |
|-----|-------|----------|------|----------|------|----------|------|---------|-------|----------|-------|
| | | 本年 | 平年 | 本年 | 平年 | 本年 | 平年 | 本年 | 平年 | 本年 | 平年 |
| 4月 | 1 | 11.6 | 7.6 | 17.7 | 13.9 | 5.1 | 1.7 | 17.5 | 23.6 | 34.9 | 26.3 |
| | 2 | 6.5 | 8.7 | 15.5 | 15.0 | -1.2 | 2.5 | 0.0 | 22.4 | 54.2 | 27.9 |
| | 3 | 9.7 | 9.7 | 16.3 | 16.1 | 2.3 | 3.4 | 8.5 | 22.0 | 26.8 | 29.1 |
| | 4 | 9.5 | 10.7 | 16.2 | 17.2 | 2.0 | 4.4 | 20.0 | 22.9 | 32.4 | 30.4 |
| | 5 | 13.9 | 11.7 | 22.7 | 18.1 | 6.5 | 5.3 | 0.0 | 23.3 | 42.5 | 31.6 |
| | 平均(計) | 11.3 | 12.8 | 16.5 | 19.3 | 5.8 | 6.4 | 36.5 | 22.1 | 27.5 | 32.9 |
| 5月 | 1 | 11.0 | 13.9 | 16.7 | 20.4 | 5.7 | 7.5 | 74.5 | 23.2 | 25.5 | 33.3 |
| | 2 | 14.2 | 14.5 | 20.0 | 20.9 | 7.2 | 8.4 | 0.0 | 27.4 | 33.6 | 32.7 |
| | 3 | 17.4 | 14.9 | 21.9 | 21.3 | 13.8 | 9.0 | 20.5 | 29.2 | 11.2 | 32.6 |
| | 4 | 17.4 | 15.6 | 20.7 | 22.0 | 14.6 | 9.6 | 103.0 | 25.4 | 7.7 | 33.7 |
| | 5 | 16.1 | 16.2 | 21.2 | 22.6 | 11.6 | 10.3 | 29.5 | 21.6 | 23.8 | 33.9 |
| | 平均(計) | 15.5 | 16.8 | 21.6 | 23.1 | 9.9 | 11.1 | 22.5 | 25.1 | 44.8 | 39.0 |
| 6月 | 1 | 17.4 | 17.6 | 22.6 | 23.6 | 11.7 | 12.1 | 50.0 | 20.5 | 25.8 | 30.5 |
| | 2 | 20.5 | 18.3 | 28.3 | 24.0 | 13.9 | 13.2 | 0.0 | 21.6 | 56.5 | 28.1 |
| | 3 | 19.8 | 19.0 | 23.3 | 24.4 | 17.9 | 14.2 | 88.0 | 27.2 | 6.0 | 26.0 |
| | 4 | 19.0 | 19.5 | 23.4 | 24.7 | 15.3 | 15.1 | 76.0 | 38.1 | 18.2 | 22.9 |
| | 5 | 19.0 | 20.2 | 26.1 | 24.9 | 14.0 | 16.2 | 2.0 | 51.3 | 37.5 | 19.0 |
| | 平均(計) | 20.7 | 20.9 | 25.4 | 25.3 | 16.7 | 17.3 | 2.5 | 62.2 | 12.9 | 17.0 |
| 7月 | 1 | 23.2 | 21.6 | 27.5 | 25.9 | 20.6 | 18.2 | 28.5 | 66.1 | 14.6 | 17.6 |
| | 2 | 22.1 | 22.2 | 24.7 | 26.7 | 20.5 | 18.8 | 297.0 | 60.8 | 0.0 | 19.6 |
| | 3 | 22.4 | 22.7 | 27.2 | 27.4 | 19.3 | 19.2 | 151.5 | 54.6 | 26.3 | 22.0 |
| | 4 | 23.7 | 23.2 | 28.8 | 28.1 | 19.6 | 19.5 | 2.0 | 46.2 | 30.2 | 25.1 |
| | 5 | 24.6 | 23.8 | 31.3 | 28.8 | 18.7 | 19.9 | 0.0 | 33.8 | 53.7 | 28.5 |
| | 平均(計) | 24.2 | 24.3 | 31.7 | 29.5 | 18.4 | 20.4 | 0.0 | 31.2 | 73.3 | 36.6 |
| 8月 | 1 | 23.4 | 23.0 | 28.5 | 27.7 | 19.5 | 19.3 | 479.0 | 292.7 | 198.1 | 149.4 |
| | 2 | 25.7 | 24.5 | 32.6 | 29.9 | 20.5 | 20.6 | 0.0 | 23.2 | 46.5 | 31.5 |
| | 3 | 24.0 | 24.4 | 29.6 | 29.9 | 20.4 | 20.5 | 206.0 | 23.2 | 26.8 | 30.8 |
| | 4 | 20.5 | 24.1 | 23.8 | 29.5 | 18.3 | 20.2 | 245.0 | 27.4 | 4.1 | 29.1 |
| | 5 | 21.3 | 23.7 | 24.7 | 29.1 | 19.1 | 19.8 | 78.5 | 29.8 | 7.5 | 28.1 |
| | 平均(計) | 23.0 | 23.2 | 26.2 | 28.6 | 21.2 | 19.2 | 51.0 | 29.7 | 4.5 | 27.4 |
| 9月 | 1 | 22.7 | 22.5 | 27.8 | 27.8 | 19.2 | 18.5 | 11.0 | 41.1 | 21.9 | 30.8 |
| | 2 | 22.9 | 23.7 | 27.5 | 29.1 | 19.8 | 19.8 | 591.5 | 174.4 | 111.3 | 177.7 |
| | 3 | 20.3 | 21.7 | 23.9 | 26.9 | 18.0 | 17.7 | 39.5 | 39.5 | 2.7 | 23.7 |
| | 4 | 20.1 | 20.9 | 25.2 | 26.1 | 15.7 | 16.8 | 27.5 | 37.7 | 22.4 | 22.7 |
| | 5 | 19.4 | 20.1 | 23.7 | 25.3 | 15.7 | 15.8 | 28.5 | 32.9 | 8.6 | 22.1 |
| | 平均(計) | 19.3 | 19.0 | 24.1 | 24.4 | 14.9 | 14.7 | 28.5 | 30.3 | 14.7 | 22.7 |
| 10月 | 1 | 18.5 | 17.9 | 25.1 | 23.4 | 13.1 | 13.4 | 6.0 | 29.9 | 29.1 | 23.0 |
| | 2 | 19.4 | 17.0 | 24.7 | 22.5 | 15.7 | 12.4 | 4.0 | 28.2 | 16.7 | 22.6 |
| | 3 | 19.4 | 19.4 | 24.4 | 24.8 | 15.5 | 15.1 | 134.0 | 198.5 | 94.2 | 136.8 |
| | 4 | 19.5 | 19.4 | 24.4 | 24.8 | 15.5 | 15.1 | 134.0 | 198.5 | 94.2 | 136.8 |
| | 5 | 19.5 | 19.4 | 24.4 | 24.8 | 15.5 | 15.1 | 134.0 | 198.5 | 94.2 | 136.8 |
| | 平均(計) | 19.5 | 19.4 | 24.4 | 24.8 | 15.5 | 15.1 | 134.0 | 198.5 | 94.2 | 136.8 |

平年値は1991~2020年までの30年間の平均