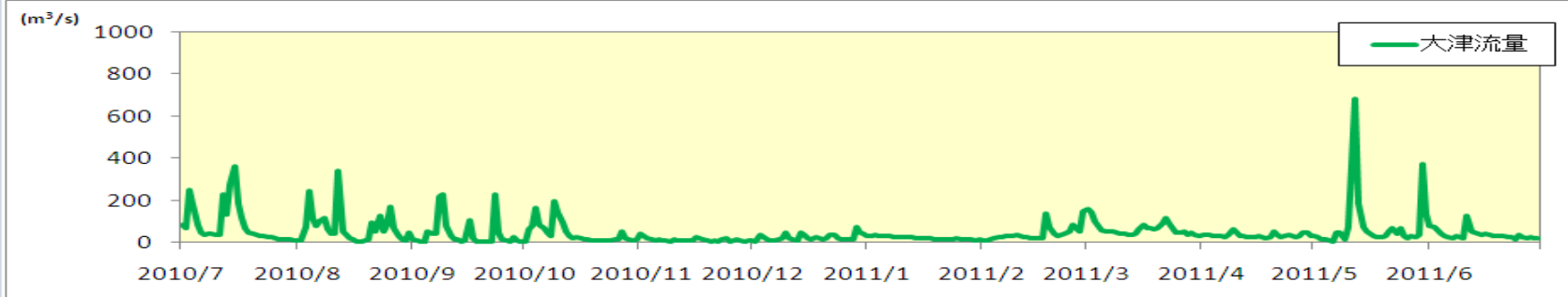
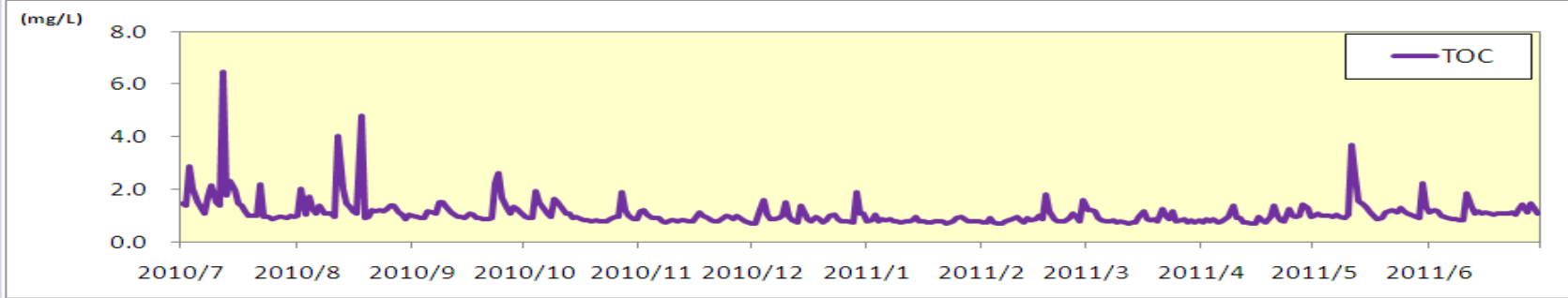
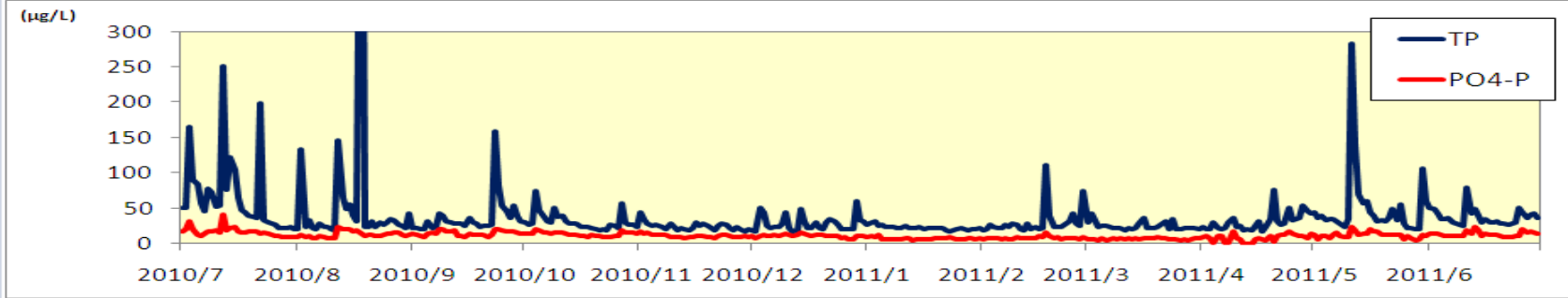
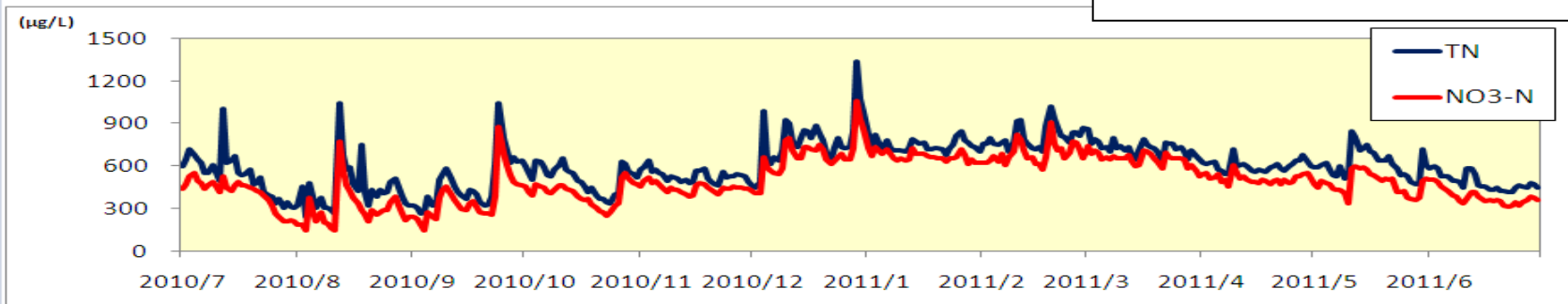
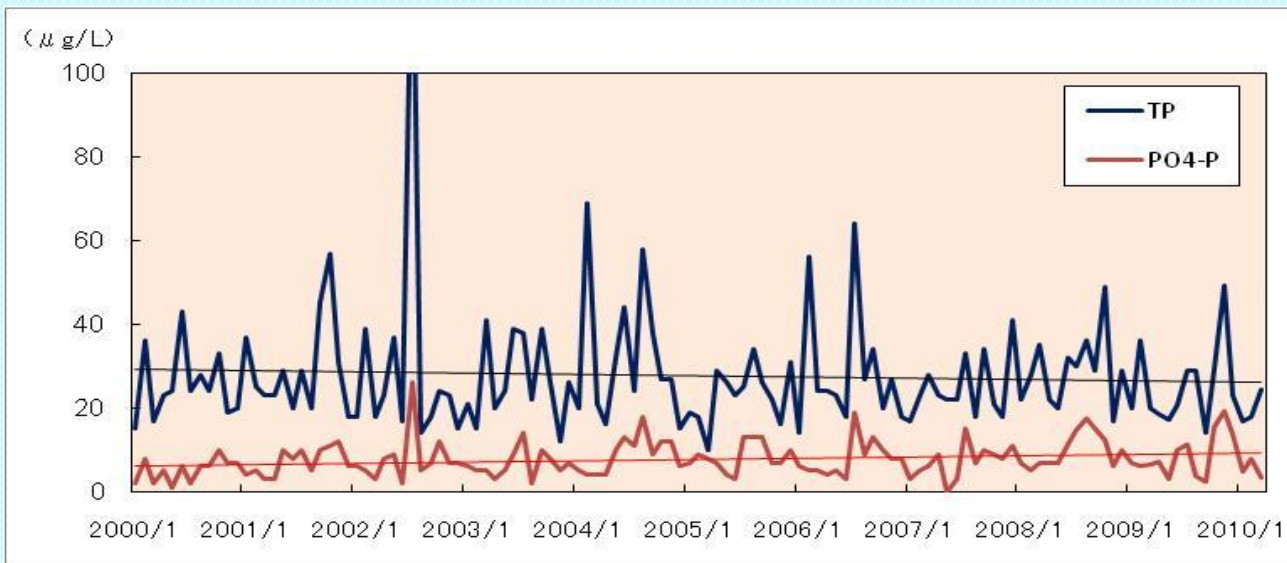
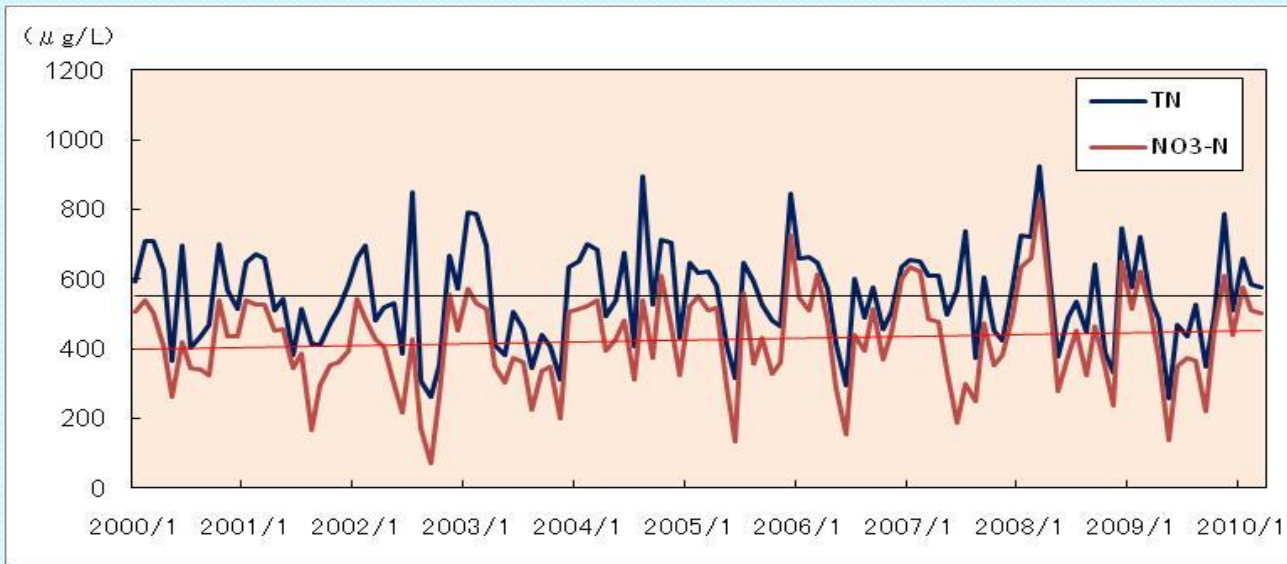


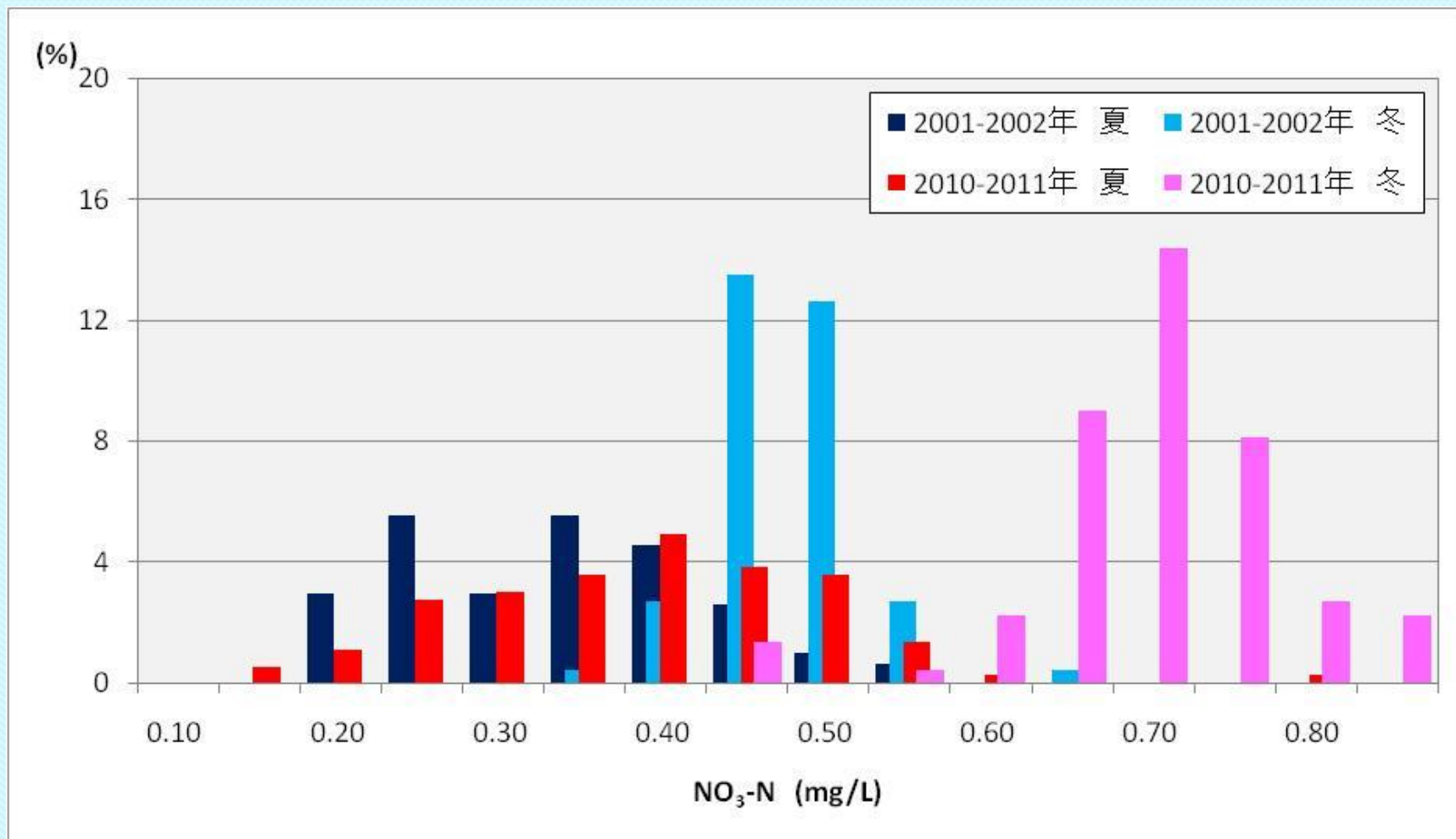
斐伊川経日変化



斐伊川経年変化



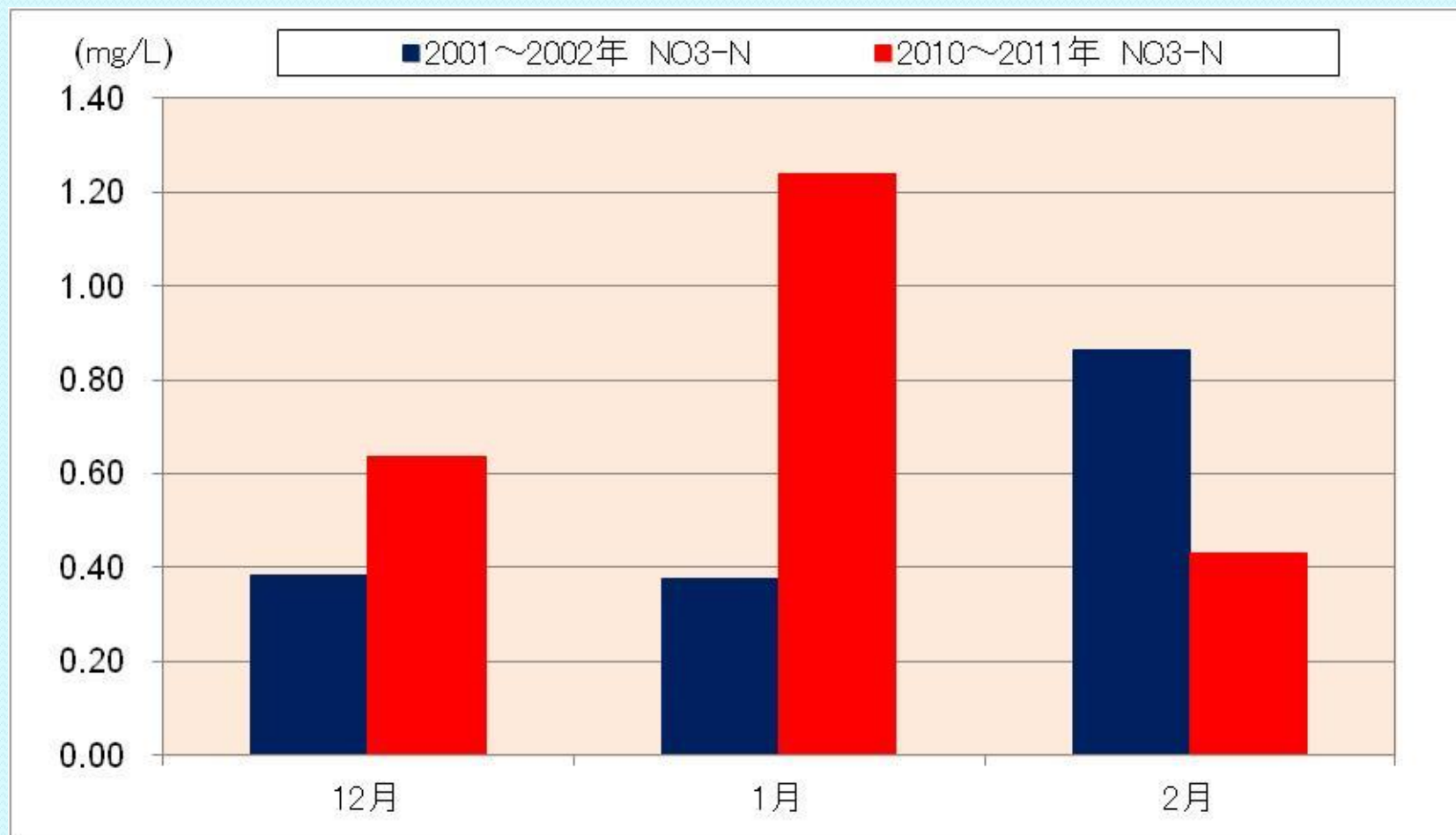
NO₃-N濃度分布比較(夏:6~8月、冬:12~2月)



平均濃度...2001~2002年夏:0.308mg/L
冬:0.361mg/L

2010~2011年夏:0.450mg/L
冬:0.675mg/L

国設松江降水NO₃-N濃度比較



降水経年変化(国設松江大気環境測定局)

