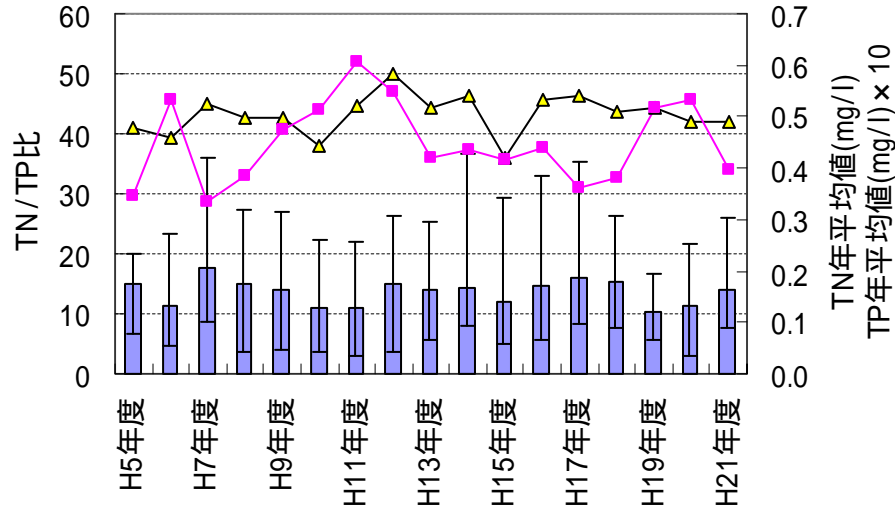


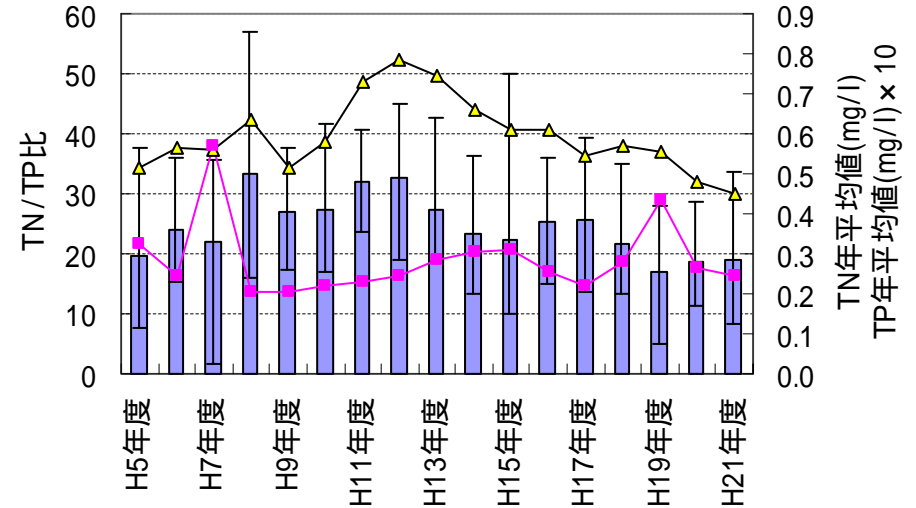
# 斐伊川と山居川のNP比について

# NP比の比較 (宍道湖と流入河川)

宍道湖:湖心(表層)

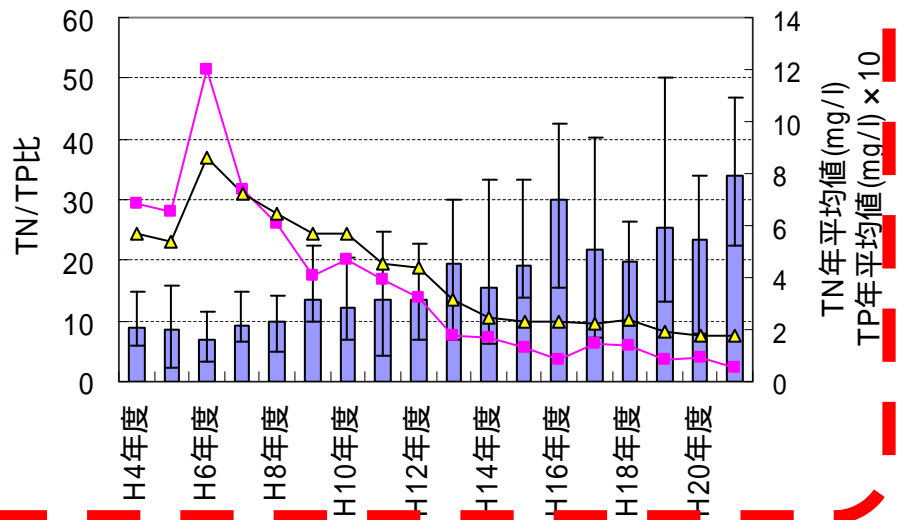
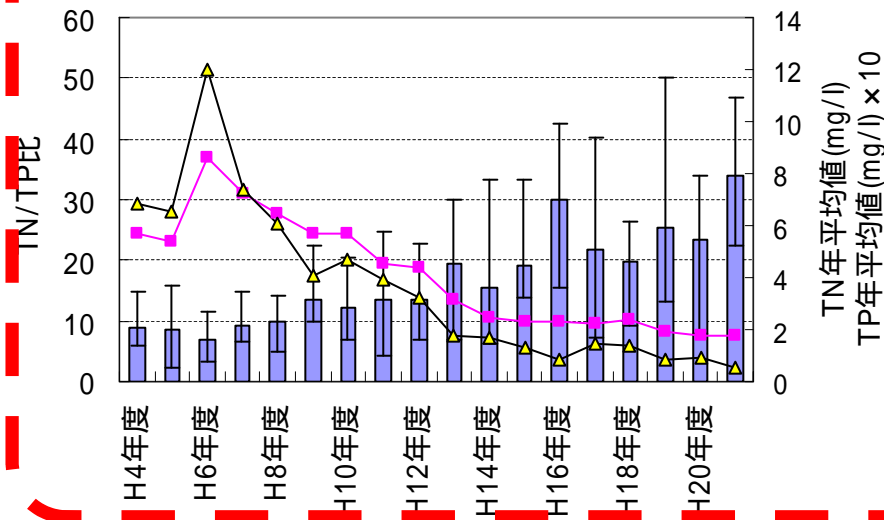


斐伊川:神立橋



山居川:庄司橋

凡例に誤り(TN年平均值とTP年平均值が逆)



■ TN/TP年平均值 ▲ TN年平均值 ■ TP年平均值 × 10



