

Activities relating to the goals of The Ramsar Convention



Conservation and Restoration

Wetlands are very important places that are the home to a variety of plant and animal species. In order to preserve the wetland environment and be able to share this with future generations, many activities are being carried out at both Shinji-ko and Nakaumi.

Lake Cleaning Project

Cleaning activities have been carried out by people living in the areas around these waterways for many years. After becoming designated as an internationally important wetland area, the local governments of Shimane Prefecture, Tottori Prefecture and municipalities around the lake area have been supporting local people in their efforts. Since 2006, both lakes are cleaned on the same day of the year in a wetland-wide project. This large-scale cleaning event is carried out on the second Sunday of June as part of the nationwide Environment Month campaign. Every year, over 8,000 people come together for the sake of their wetlands. We encourage you to help us and join in this annual event. You too can help preserve the rich natural environment and help us to share this wetland area with future generations.

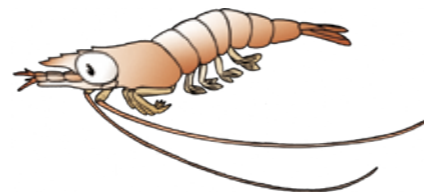


Yoshi (Reed) Cutting

There are many communities of reeds growing in Shinji-ko. In winter every year, volunteers from local groups and businesses work together to cut back the dried reeds, so that they do not drift away and dirty the lake.

Cleaning and Beautification Work

There are many local people who work hard to make sure this wetland area is clean and beautiful for everyone to enjoy by keeping the area around their homes and fields tidy.



Wise Use

The Ramsar Convention strives to not only conserve wetlands, but to also utilize these areas in a sustainable way. This is called 'Wise Use'.

Many Faces of Wise Use

There are many ways in which people can wisely use and enjoy everyday life in and around this wetland environment, such as catching fish and gathering shellfish, playing along the lakeshore and taking part in festivals.

Nakaumi



Lakeside Concert



Open-Water Swim



Seaweed Harvesting

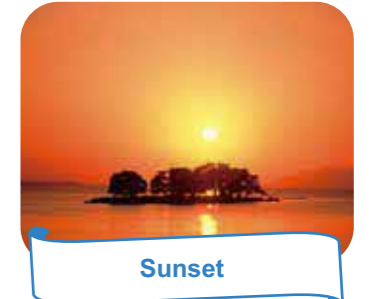
Shinji-ko



Shijimi (Corbicula Clam) Fishing



Haze (Goby) Fishing



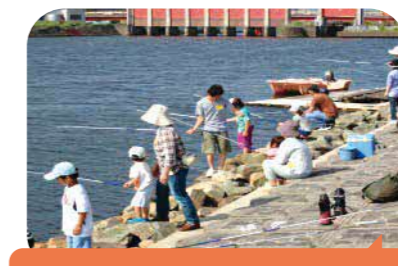
Sunset

Activities Focused on Wise Use

The prefectural governments of Shimane and Tottori are very keen to ensure conservation and wise use of both wetland areas, taking it in turns to hold symposiums (including guest speakers and outdoor education activities) that anyone can join.



Field Work



Hands-On Experiences



Presentations

