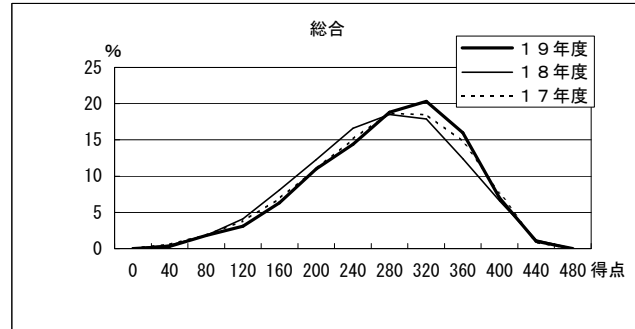
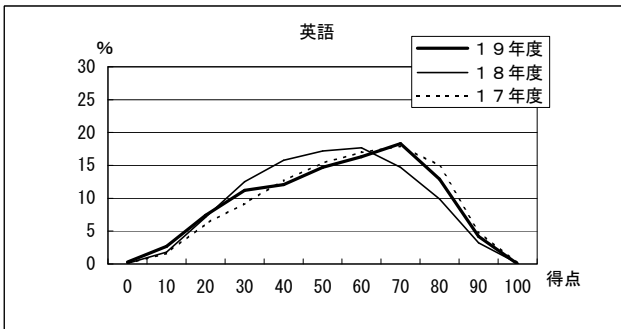
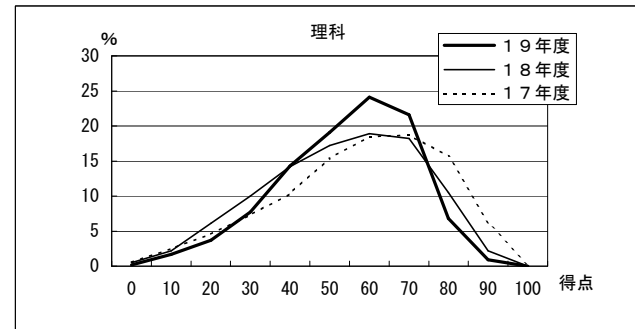
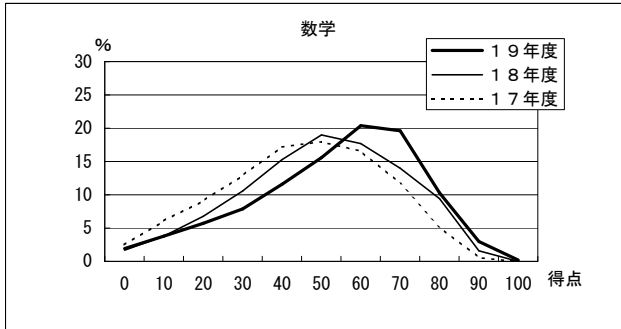
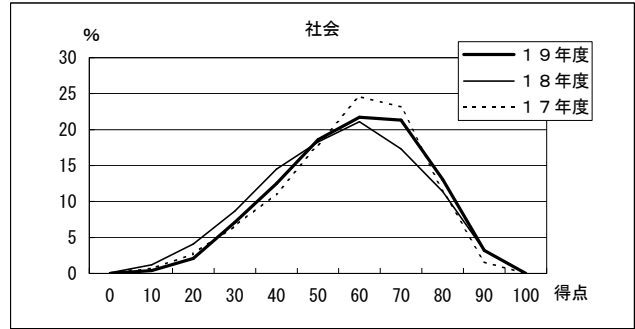
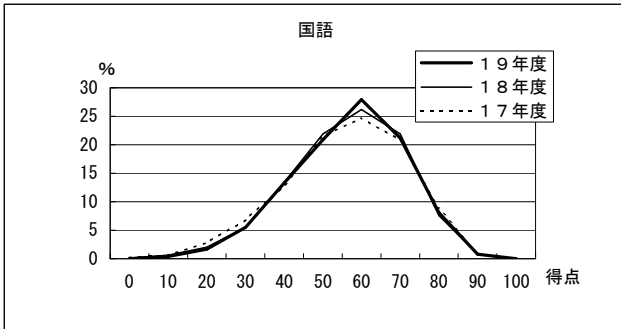


## 4 得点分布



(参考)過年度 平均点一覧

選抜年度	国語	社会	数学	理科	英語	総合
H1	53.8	41.7	57.4	55.8	57.1	265.7
H2	49.0	55.2	61.7	66.3	55.7	288.0
H3	62.9	61.5	57.2	49.7	62.9	294.0
H4	56.8	59.3	53.9	70.9	57.5	299.2
H5	55.7	55.8	56.5	56.0	65.5	289.6
H6	55.9	55.9	57.9	60.3	54.8	284.9
H7	60.0	67.4	51.6	48.0	61.8	288.7
H8	66.5	48.1	65.7	52.4	64.7	297.4
H9	55.8	62.4	52.7	55.0	56.7	282.6
H10	70.9	55.6	50.6	53.8	59.2	290.0
H11	63.8	61.2	53.3	47.0	62.1	287.3
H12	63.2	62.1	60.9	63.0	60.5	309.7
H13	60.9	56.0	58.5	54.5	62.0	291.9
H14	66.7	62.8	62.3	64.5	59.4	315.6
H15	61.1	53.8	59.1	62.3	55.6	292.0
H16	59.2	56.2	60.7	62.8	57.1	296.0
H17	60.3	62.0	49.7	62.1	60.7	294.9
H18	60.7	59.8	54.4	57.8	56.6	289.2
<b>H19</b>	<b>61.1</b>	<b>62.7</b>	<b>57.9</b>	<b>58.8</b>	<b>58.5</b>	<b>298.9</b>