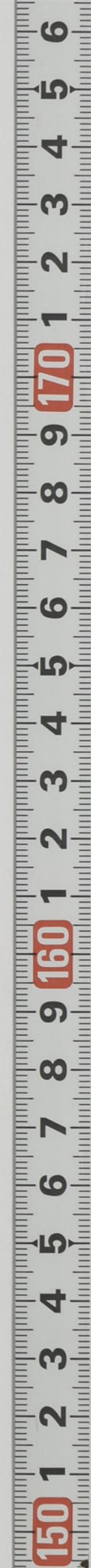




【大谷家文書】 6-166-7









寄 父

[illegible]







上人  
上  
上人

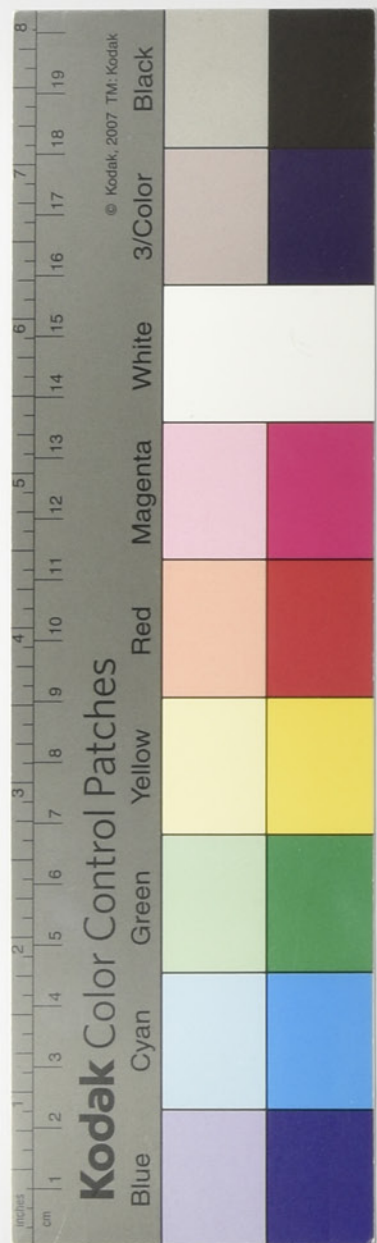


A

福所

[illegible]





Handwritten text in a cursive script, likely a historical document or manuscript, written on aged paper. The text is organized into several lines, with some lines starting with a large initial letter. The script is dense and characteristic of early modern European handwriting.

6  
166  
7  
大谷家文書