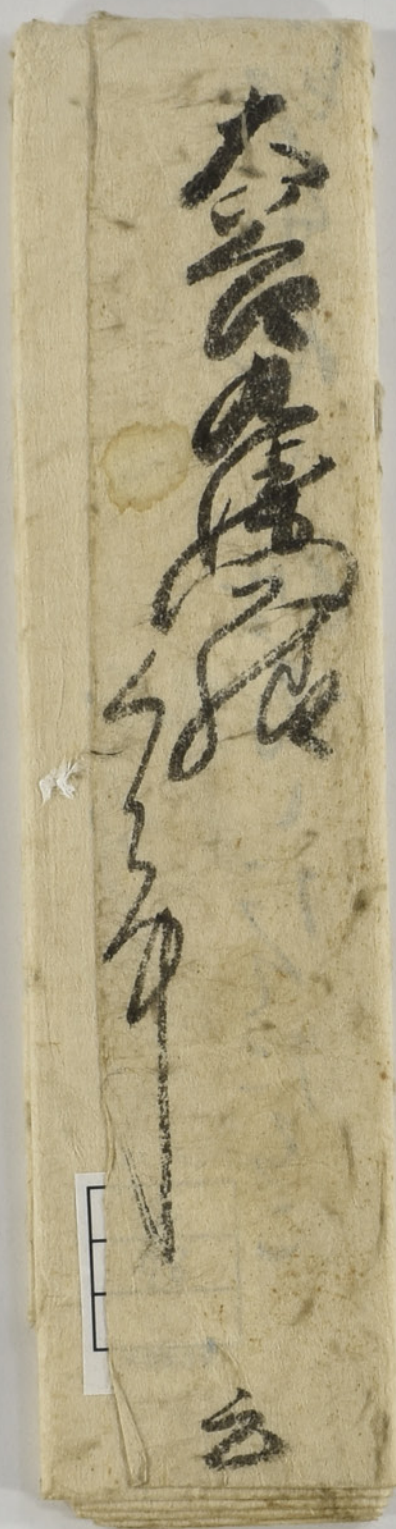
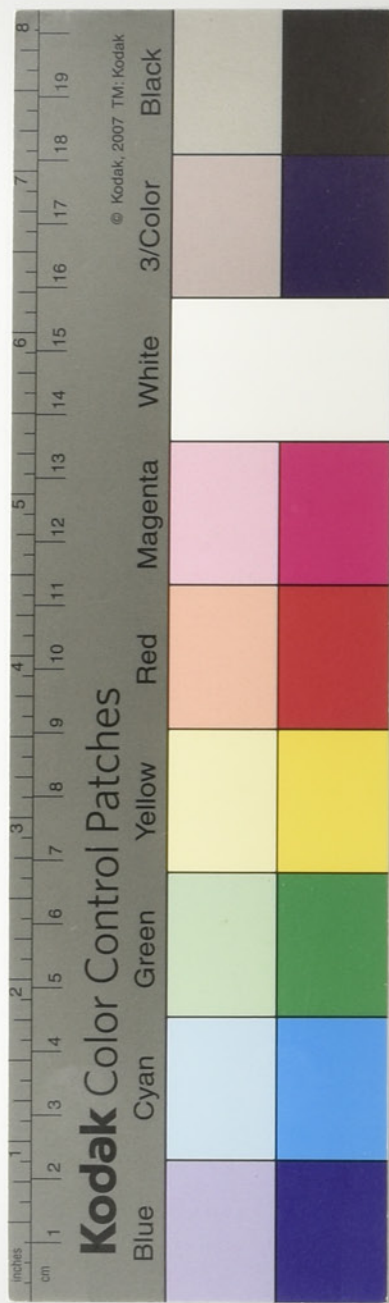




【大谷家文書】 2-78





Handwritten text in Japanese cursive (sōsho) on aged, yellowed paper. The text is written in dark ink and appears to be a formal document or letter. The paper shows signs of wear, including creases and discoloration. A small red rectangular label with the number '180' is visible in the upper left corner of the document. A small white label with the number '2' and '78' is visible in the lower left corner of the document.

方

存

以手爲之

うき作と彫成筆下稿作

萬曆二十九年

王羲之
一
幅
手
內
結

卷之五 天祐和司

海帝持世為蓮華太子作人瑞

ちもたてゝあそびたてゝ
二
は

客有問者
此所
刻

如木之有葉
 葉落而木枯
 如人之有子
 子死而人老

是時能已午方不亦何處為

晴々乃物乞ふに
子と坊

[illegible]