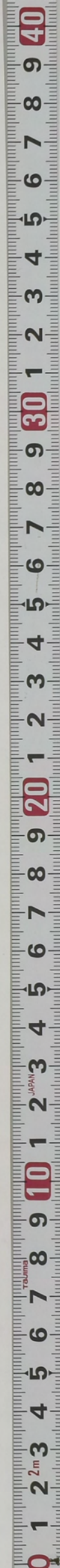
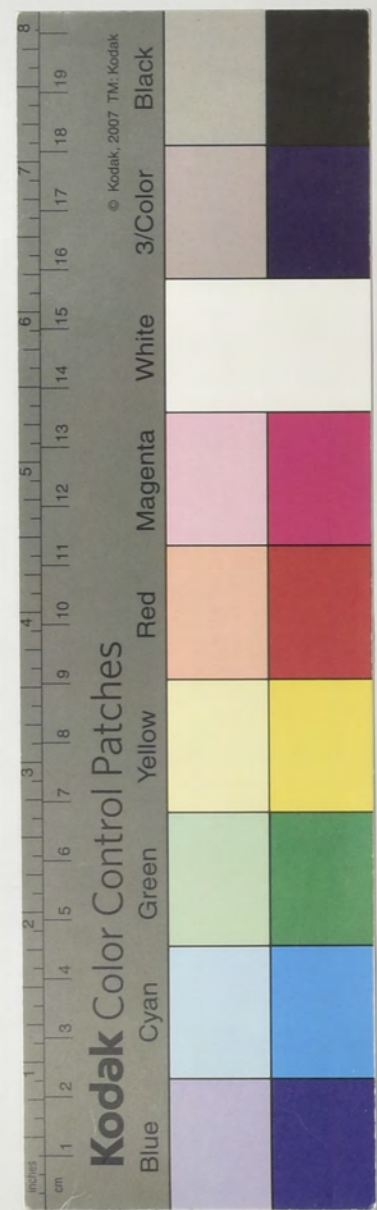


52
1
村川家文書

【村川家文書】52-1





Handwritten Japanese text in cursive (sōsho) style, arranged vertically in six columns. The text is written on a piece of aged, yellowish paper. The first column contains two lines of text. The second column contains a large character '大' (dai) followed by a smaller character '一' (ichi). The third column contains a large character '二' (ni) followed by a smaller character '三' (san). The fourth column contains a large character '四' (shi) followed by a smaller character '五' (go). The fifth column contains a large character '六' (roku) followed by a smaller character '七' (shichi). The sixth column contains a large character '八' (hachi) followed by a smaller character '九' (kyū).

